

# Quick Guide for the V-Tap VoIP 1 & 2



The V-Tap VoIP is a device that captures VoIP telephony from a network and stores this data onto an SD card and/or sends this data to a server, which can be an Apresa recorder or the V-Archive software running on a PC.

The V-Tap VoIP unit itself must hold as many channel licenses as the number of VoIP telephones that needs to be recorded

**NOTE1:** The SD card must be formatted with the FAT32 file system. Cards above 32 GB (up to 2 TB) are not tested and must be formatted as FAT32 first, before inserting them into the V-Tap.

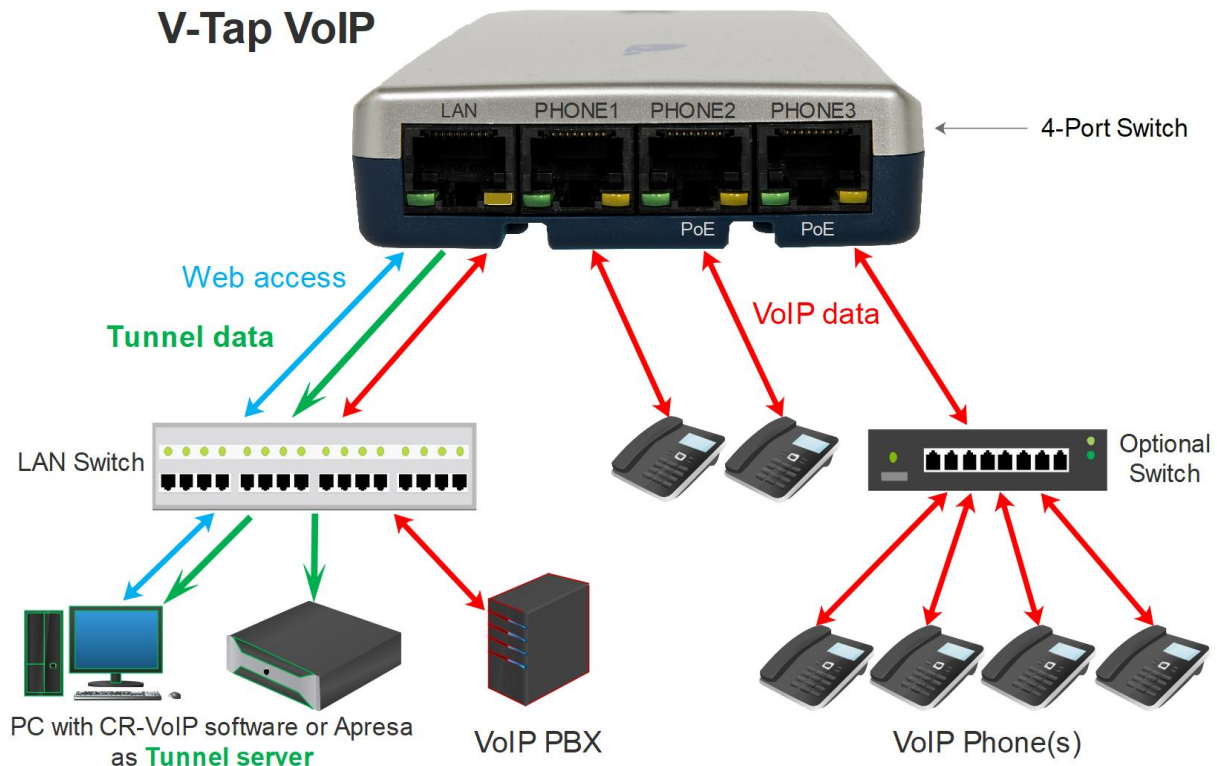
**NOTE2:** Only ports PHONE2 and PHONE3 are suitable to connect a Power over Ethernet (PoE) loop. The V-Tap itself does not generate PoE.

## BOX CONTENT

- V-Tap VoIP unit
- USB adapter
- USB cable
- LAN cable
- SD card
- CD with manual and V-Archive software for the PC
- 1 year Support & Update license (S&U)
- This Quick Guide

# Quick Guide for the V-Tap VoIP 1 & 2

## HARDWARE INSTALLATION



- By default, the V-Tap VoIP functions as a normal 4-port switch.
- Connect the local network to any port on the V-Tap.
- Connect one or more VoIP phones to any other port on the V-Tap.
- For a **PoE** powered phone, use the PHONE2 and PHONE3 ports.
- Connect the USB of the V-Tap to the adapter for power.

## SETUP THROUGH THE WEB INTERFACE

There are two ways to access the web interface of the V-Tap VoIP:

- 1) Start a browser and enter in the address line <http://vtapXXXX.local>  
**XXXX** are the last 4 digits of the MAC address, found on the bottom.  
*Note: It may take some time before the local name is known to the network.*

```
010.02500 V-Tap
MAC: 00034901019E
SN: 500464
```

For this V-Tap, enter <http://vtap019e.local>

- 2) Or enter an IP address on the first line of the text file "IP.TXT", put this file onto an SD card and insert the card into the V-Tap.  
Then enter this IP address in the address line of the browser.

Login with the user name **admin** and password **admin**.

After login, the settings page appears. For a detailed description of the above possibilities and of all the settings, see the V-Tap VoIP manual.

# Quick Guide for the V-Tap VoIP 1 & 2

## PC REQUIREMENTS FOR THE V-ARCHIVE SOFTWARE

Windows Vista/7/8/10 , Intel Pentium >2GHz , 4GByte RAM , >100 MB free disk space.

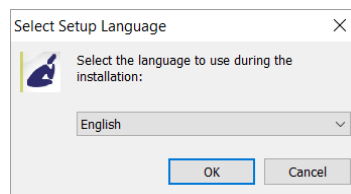
## V-ARCHIVE SOFTWARE INSTALLATION

1. Connect the V-Tap VoIP to a free USB port on your PC.

**NOTE:** The V-Tap VoIP must be connected to the same PC, otherwise the installer will not continue.

### 2. V-Archive software installation

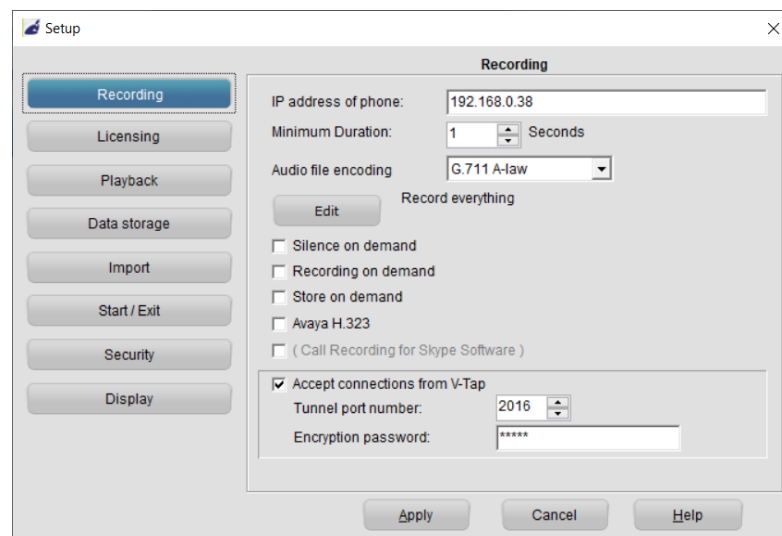
- Place the CD-ROM in your computer and the software installation starts automatically. In case the installation does not start, locate the file 'VArchiveInstall.exe' (former 'CRVoIPInstall.exe') on the CD and start it manually. The following window appears:



- Select your preferred language for the installation and press OK.
- The menu will ask for an installation key, please enter: **V-TAP**
- Now you can proceed with the next steps of the installation and you will be asked to confirm the locations on your hard drive where to store the software and the data files.

**NOTE:** A separate installation of the **WinPcap** driver may be needed and is started automatically, depending on the absence of this low-level network interface driver.

- To setup V-Archive to receive data from the V-Tap, go to Options, Setup, Recording tab:



**NOTE1:** The PC's IP address must be entered as the "Tunnel Server Address" in the V-Tap unit.

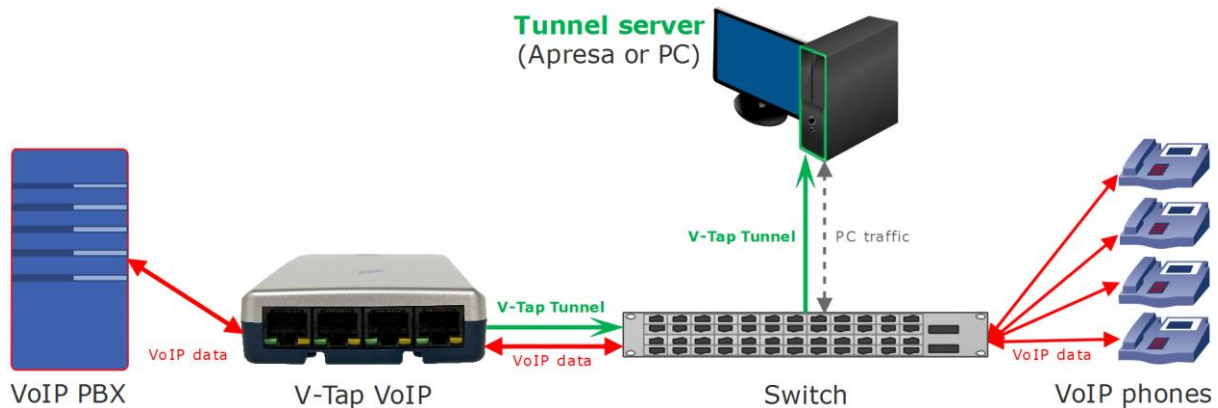
**NOTE2:** The PC's firewall must be open for TCP port 2016, the "Tunnel Destination Port" in the V-Tap unit.

**NOTE3:** The Encryption password must be the same as the "Tunnel Encryption Password" in the V-Tap unit.

**NOTE4:** The V-Archive software itself does not need channel licenses to receive from the V-Tap unit.

# Quick Guide for the V-Tap VoIP 1 & 2

## CHECKLIST FOR TUNNEL CONNECTION



A connection between V-Tap and PC software (or Apresa) is needed to get the recorded data automatically into a user accessible database. The following checklist can be used to setup this Tunnel connection:

- 1) Install the Hardware and be sure that the phone's VoIP data passes the V-Tap VoIP.
- 2) Install the V-Archive software on a PC and enable V-Tap connections (see page 3).
- 3) Open the Settings page of the V-Tap in a browser by entering <http://vtapXXXX.local>  
XXXX are the last 4 digits of the MAC address, found on the bottom of the unit (see page 2).  
*Note: It may take some time after first connect before this local name is known to the network.*
- 4) On that page, the PC's IP address must be entered as the "Tunnel Server Address".
- 5) The PC's **firewall** must be open for TCP port **2016**, the default "Tunnel Destination Port".
- 6) The Tunnel connection to the PC is stable when the **GREEN LED is steady**, not blinking!  
Also, the V-Tap must be shown with its MAC address in the status line of V-Archive.
- 7) For first tests, better turn off "Tunnel Data Encryption". Otherwise, be sure that the Encryption password is the same for both V-Tap and V-Archive.
- 8) The V-Tap stores only data that passes the "Tunnel TCP/SIP Port Filter". In case of an unknown port or for test, this filter can be set to zero to store **all** network traffic.
- 9) When data is stored by the V-Tap during a call, the **BLUE LED** blinks fast.
- 10) To see if the PC receives something from the V-Tap, it is possible to make a network trace for test purposes. In V-Archive, go to menu Actions and select 'Network trace', press Start, make a call, press Stop and then Save. From the zip file 'tunneltrace.pcap' can be analyzed with Wireshark.
- 11) The SD card in the V-Tap should contain ".TUN" files when data is captured.  
The SD card can be read by the V-Archive software in menu File and 'Import from V-Tap'.
- 12) When the V-Tap is connected to a trunk, then it sees all calls that are passing. The V-Tap **cannot** filter those calls on phone number. There is no black- or white-list function, only an IP filter.