

Quick Guide for the V-Tap ISDN BRI



The V-Tap ISDN BRI is a device that can record the calls from an ISDN-2 line.

The captured data is stored onto an SD card and can optionally be sent to an external server (an Apresa recorder or the V-Archive software on a PC).

NOTE1: The USB power supply needs to deliver 500 mA current, else the system may not start.

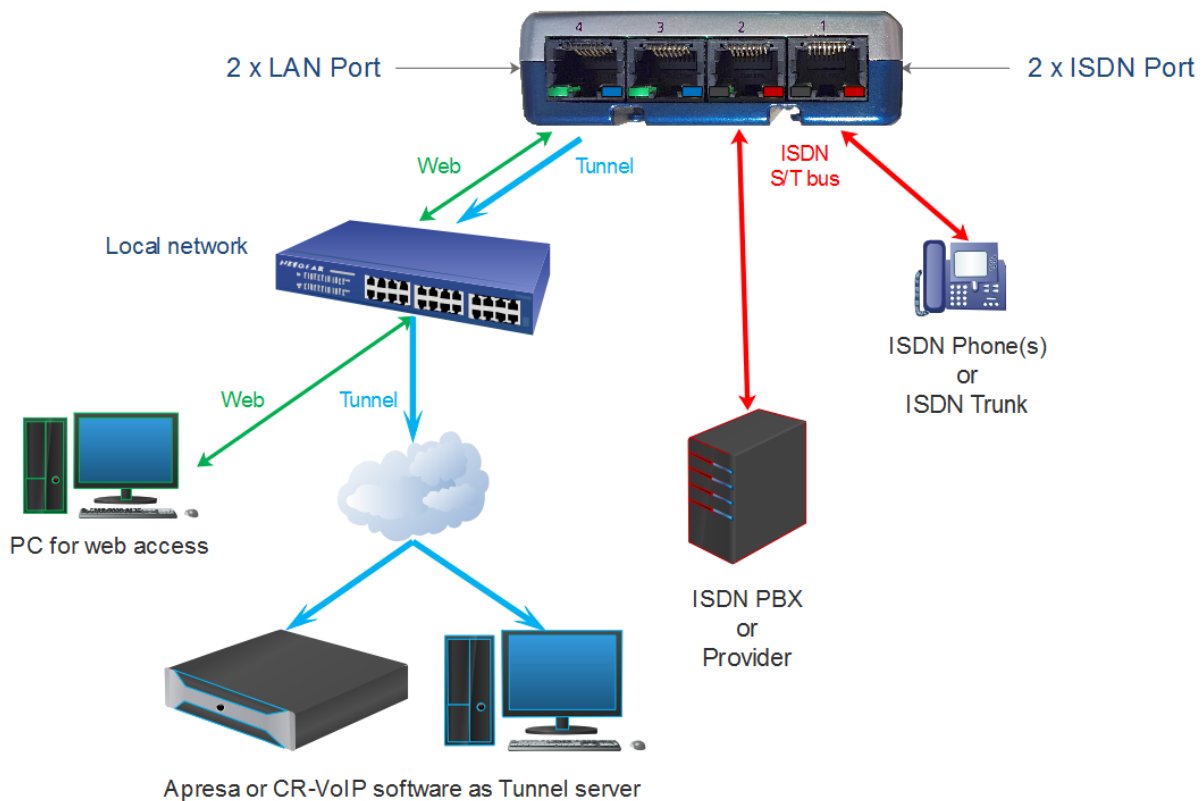
NOTE2: The SD card must be formatted with the FAT32 file system. Cards above 32 GB (up to 2 TB) are not tested and must be formatted as FAT32 first, before inserting them into the V-Tap.

BOX CONTENT

- V-Tap ISDN BRI unit
- USB adapter
- USB cable
- ISDN cable with two RJ45 connectors
- SD card
- CD with manual and V-Archive software for the PC
- 1 year Support & Update license
- This Quick Guide

Quick Guide for the V-Tap ISDN BRI

HARDWARE INSTALLATION



- Connect the ISDN phone with the V-Tap to ISDN port 1.
- Connect the ISDN coming from the wall/PBX to ISDN port 2.
- Optionally connect the network to port 3 or 4 for web access and/or Tunnel function.
- Insert an SD card into the V-Tap to store the recordings on.
- Connect the USB of the V-Tap for power supply (needs 500 mA).

SETUP THROUGH THE WEB INTERFACE

- **When Wi-Fi is available** and enabled on the V-Tap, search on your mobile phone or laptop for the name "V-Tap...", connect to it using the 12 digits MAC address as the Wi-Fi password, found on the bottom of the unit. Then open a browser and enter the IP: 192.168.55.66
- **When using a LAN cable**, there are two ways to access the web interface:
 - 1) Start a browser and enter in the address line <http://vtapXXXX.local>
XXXX are the last 4 digits of the MAC address, found on the bottom of the unit.
Note: It may take some time before the local name is known to the network.

010.02500 V-Tap
MAC: 00034901019E
SN: 500464

For this V-Tap, enter <http://vtap019e.local>

- 2) Or enter an IP address on the first line of the text file "IP.TXT", put this file onto an SD card and insert the card into the V-Tap. Then enter this IP address in the browser.

Login with the user name **admin** and password **admin**.

Quick Guide for the V-Tap ISDN BRI

PC REQUIREMENTS FOR THE V-ARCHIVE SOFTWARE

Windows Vista/7/8/10 , Intel Pentium >2GHz , 4GByte RAM , >100 MB free disk space.

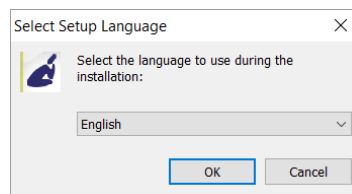
V-ARCHIVE SOFTWARE INSTALLATION

1. Connect the V-Tap ISDN BRI to a free USB port on your PC.

NOTE: The V-Tap unit must be connected to the same PC, otherwise the installer will not continue.

2. Software installation

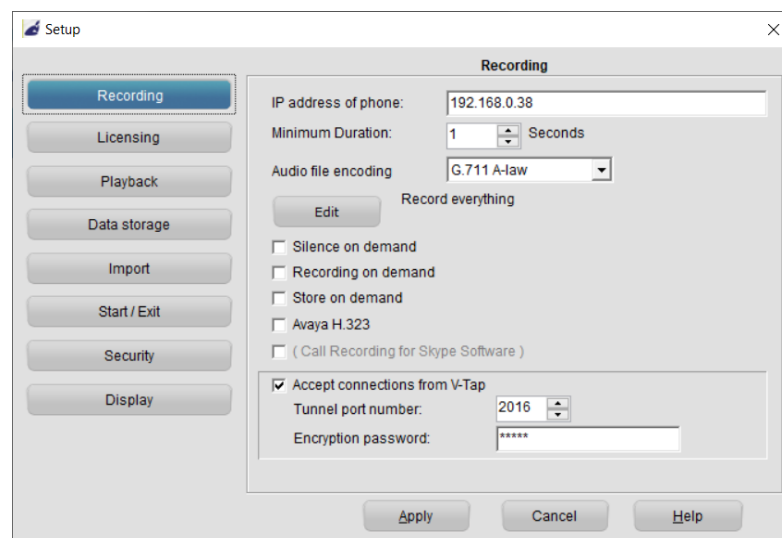
- Place the CD-ROM in your computer and the software installation starts automatically. In case the installation does not start, locate the file 'VArchiveInstall.exe' (former 'CRVoIPInstall.exe') on the CD and start it manually. The following window appears:



- Select your preferred language for the installation and press OK.
- The menu will ask for an installation key, please enter: **V-TAP**
- Now you can proceed with the next steps of the installation and you will be asked to confirm the locations on your hard drive where to store the software and the data files.

NOTE: A separate installation of the **WinPcap** driver may be needed and is started automatically, depending on the absence of this low-level network interface driver.

- To setup V-Archive to receive data from the V-Tap, go to Options, Setup, Recording tab:



NOTE1: The PC's IP address must be entered as the "Tunnel Server Address" in the V-Tap unit.

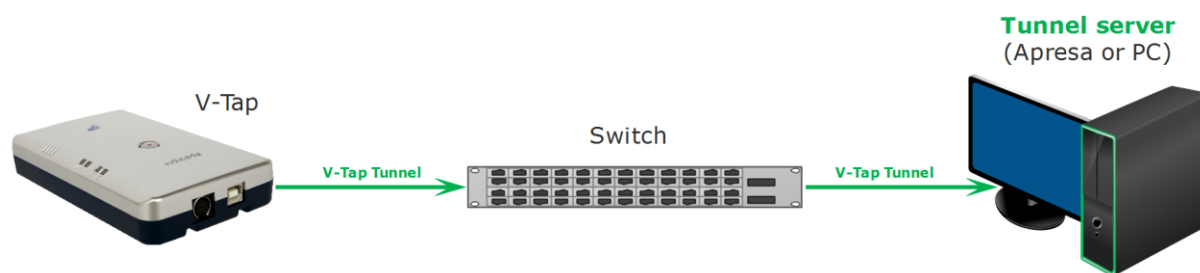
NOTE2: The PC's firewall must be open for TCP port 2016, the "Tunnel Destination Port" in the V-Tap unit.

NOTE3: The Encryption password must be the same as the "Tunnel Encryption Password" in the V-Tap unit.

NOTE4: The V-Archive software itself does not need channel licenses to receive from the V-Tap unit.

Quick Guide for the V-Tap ISDN BRI

CHECKLIST FOR TUNNEL CONNECTION



A connection between the V-Tap and the V-Archive PC software (or Apresa recorder) is needed to get the recorded data automatically into a user accessible database.

The following checklist can be used to setup this Tunnel connection:

- 1) Install the Hardware (see page 2).
- 2) Install the V-Archive software on a PC and enable V-Tap connections (see page 3).
- 3) Open the Settings page of the V-Tap in a browser by entering <http://vtapXXXX.local>
XXXX are the last 4 digits of the MAC address, found on the bottom (see page 2).
Note: It may take some time after first connect before this local name is known to the network.
- 4) The "Tunnel Server Address" must be filled in with the IP address or name of the PC.
- 5) Any **firewall** must be open for TCP port **2016**, the default "Tunnel Destination Port".
- 6) The Tunnel connection to the PC is stable when the **GREEN LED is steady**, not blinking!
Also, the V-Tap must be shown with its MAC address in the status line of V-Archive.
- 7) For first tests, better turn off "Tunnel Data Encryption". Otherwise, be sure that the Encryption password is the same for both V-Tap and Tunnel server.
- 8) When data is stored by the V-Tap during a call, the **BLUE LED** blinks.
- 9) To see if the PC receives something from the V-Tap, it is possible to make a network trace for test purposes. In V-Archive go to menu Actions and select 'Network trace', press Start, make a short call, wait 10 seconds, press Stop and then Save.
From the zip file 'tunneltrace.pcap' can be analyzed with Wireshark.
- 10) The SD card in the V-Tap should contain ".WAV" files.
The SD card can be read by V-Archive in menu File and 'Import from V-Tap'.